

Weigh module KIMD-1

Technical data

Rated load (R.L.)		kN	500, 800
Combined error (terminal)		% of R.O.	± 0.1
Repeatability		% of R.O.	0.02
Overload	safe*	% of R.L.	50
	ultimate*	% of R.L.	100
Input voltage	recommended	V DC or AC	10
	maximum	V DC or AC	18
Input resistance		ohm	350 ± 5
Output resistance		ohm	350 ± 0.5
Rated output (R.O.)		mV/V	2.040
Tolerance of R.O.		% of stated R.O.	± 0.25
Zero balance		% of R.O.	± 2
Tolerance of shunt calibration values		% of value**	± 0.25
Creep at R.L. after 30 min		% of R.L.	± 0.03
Temperature range		°C	-40 to +80 (+100)***
Temperature effect (-10 to +50°C)	on output	% of output/°C	± 0.003
	on zero balance	% of R.O./°C	± 0.003
Insulation resistance at 200 VDC		Gohm	> 4
Material			Yellow chromate steel
Electrical connection			10 m shielded four conductor cable
Degree of protection			IP 67

* referring to recommended loading case

** see calibration sheet for the load cell

*** -40 to +100°C on demand

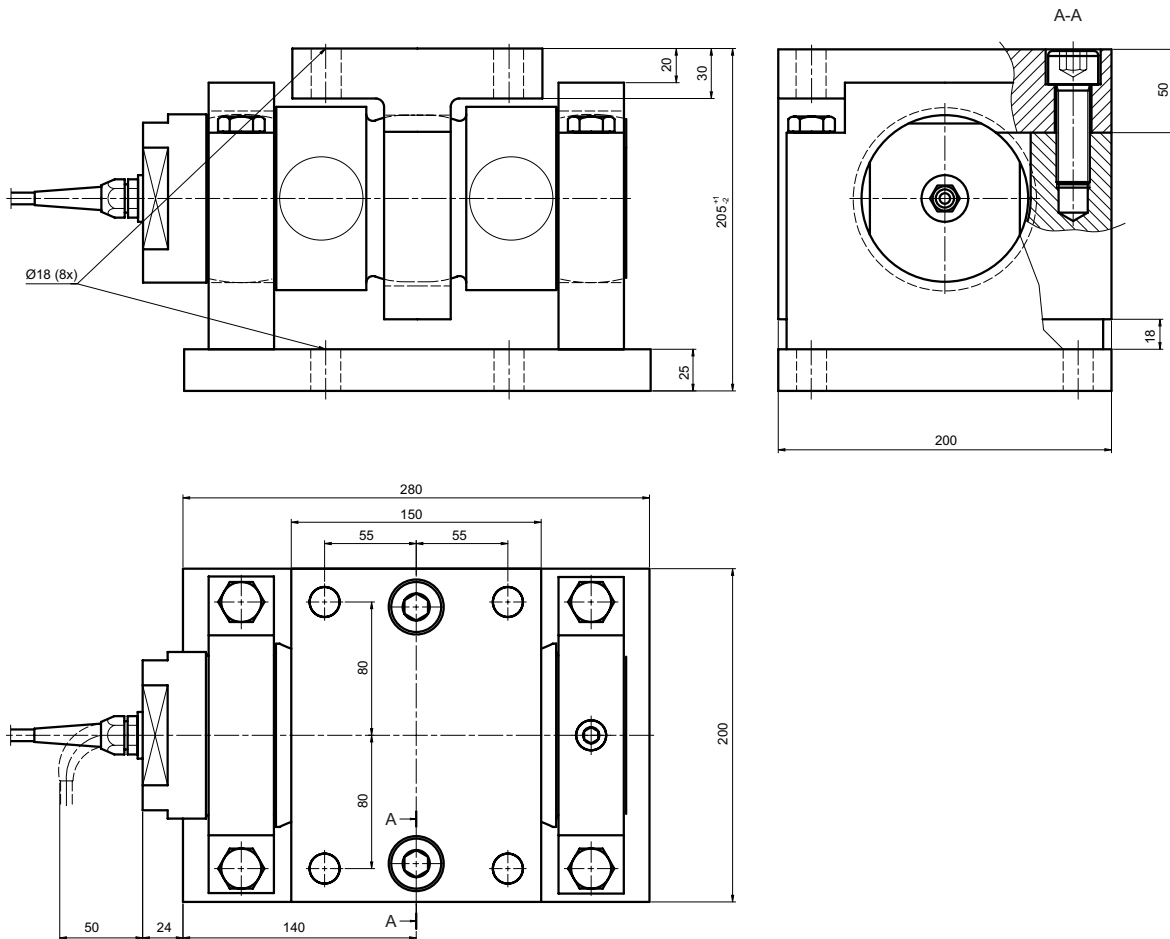


ATEX certified versions for use in explosive atmospheres are available.

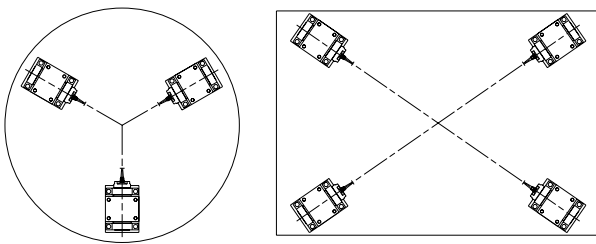
II 1GD

EEx ia IIC T4 Tamb=60 °C

Dimensions KIMD-1



Orientation of weigh modules



Recommended weigh module orientation in order to give self locking conditions and freedom for mechanical movements caused by temperature.



Vishay Nobel AB
Box 423, SE-691 27 Karlskoga, Sweden
Phone +46 586 63000 · Fax +46 586 63099
info.se@vishaynobel.com · www.vishaynobel.com